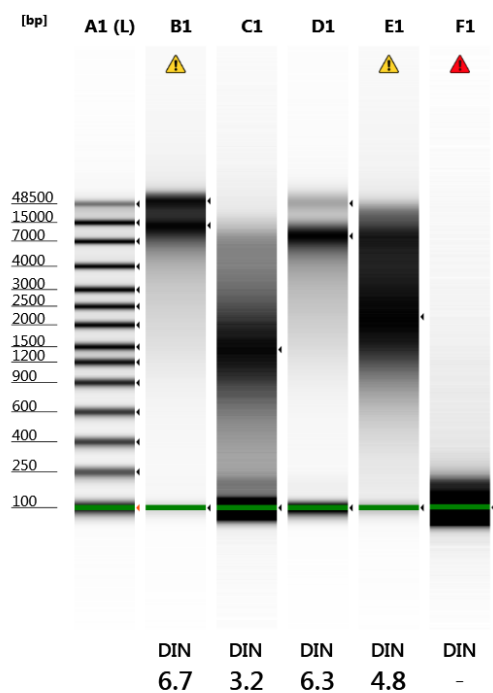


Filename: 2018-07-06-01_Beef_Pork.gDNA

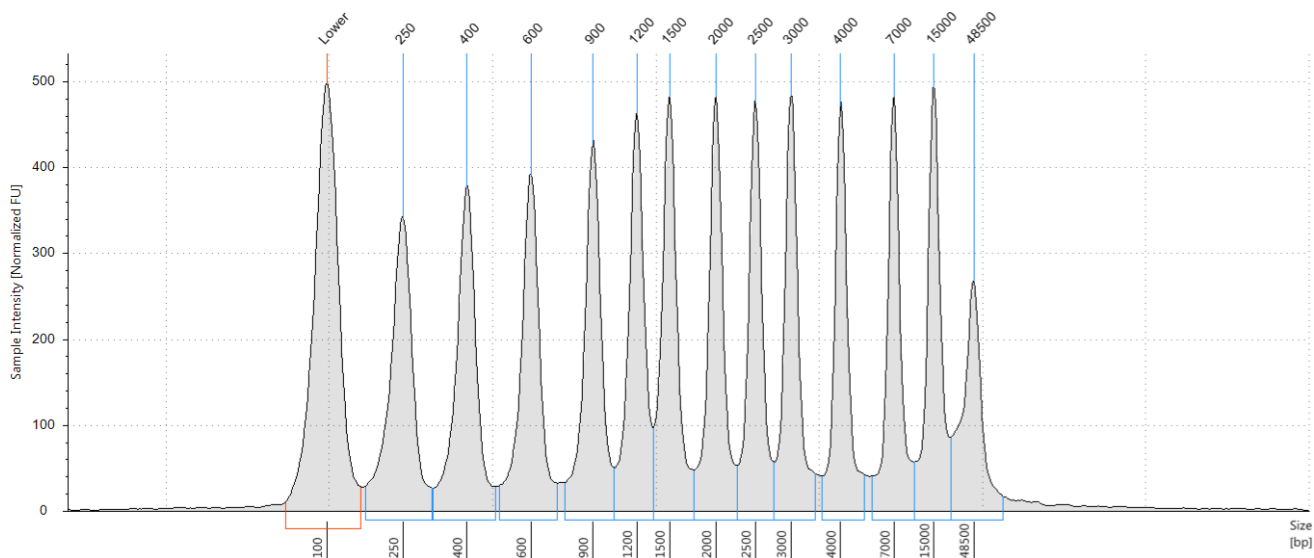


Default image (Contrast 50%), Image is Scaled to Sample

Sample Info

Well	DIN	Sample Description	Alert	Observations
A1	-	Ladder		Ladder
B1	6.7	1 Beef Before	⚠	Sample concentration outside recommended range
C1	3.2	2 Beef After		
D1	6.3	3 Pork Before		
E1	4.8	4 Pork After	⚠	Sample concentration outside functional range for DIN
F1	-	blank	⚠	Sample concentration outside functional range for DIN

A1: Ladder



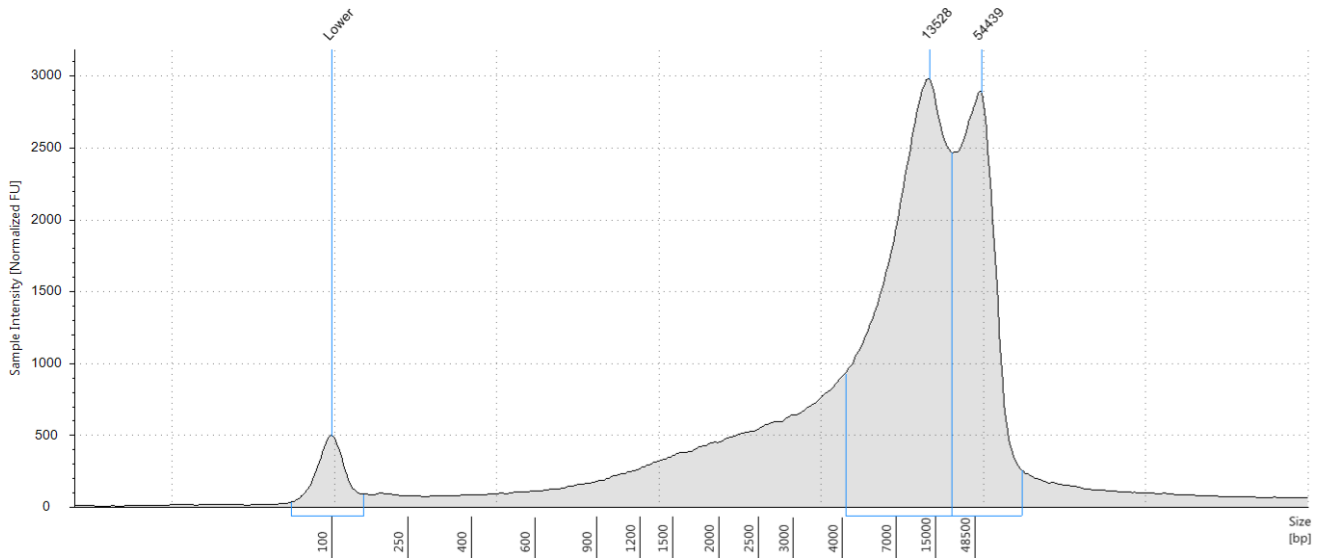
Sample Table

Well	DIN	Sample Description	Alert	Observations
A1	-	Ladder		Ladder

Peak Table

Size [bp]	Calibrated Conc. [ng/µl]	Assigned Conc. [ng/µl]	% Integrated Area	From [bp]	To [bp]	Peak Comment	Observations
100	8.50	8.50	-	61	150		Lower Marker
250	5.24	-	8.55	158	308		
400	5.13	-	8.36	311	479		
600	4.99	-	8.14	492	715		
900	5.00	-	8.16	749	1034		
1200	5.08	-	8.28	1034	1348		
1500	5.10	-	8.31	1348	1740		
2000	4.89	-	7.98	1740	2254		
2500	4.54	-	7.41	2254	2749		
3000	4.61	-	7.53	2749	3450		
4000	4.33	-	7.07	3595	5138		
7000	4.36	-	7.10	5531	10247		
15000	4.59	-	7.48	10247	20795		
48500	3.45	-	5.62	20795	>60000		

B1: 1 Beef Before



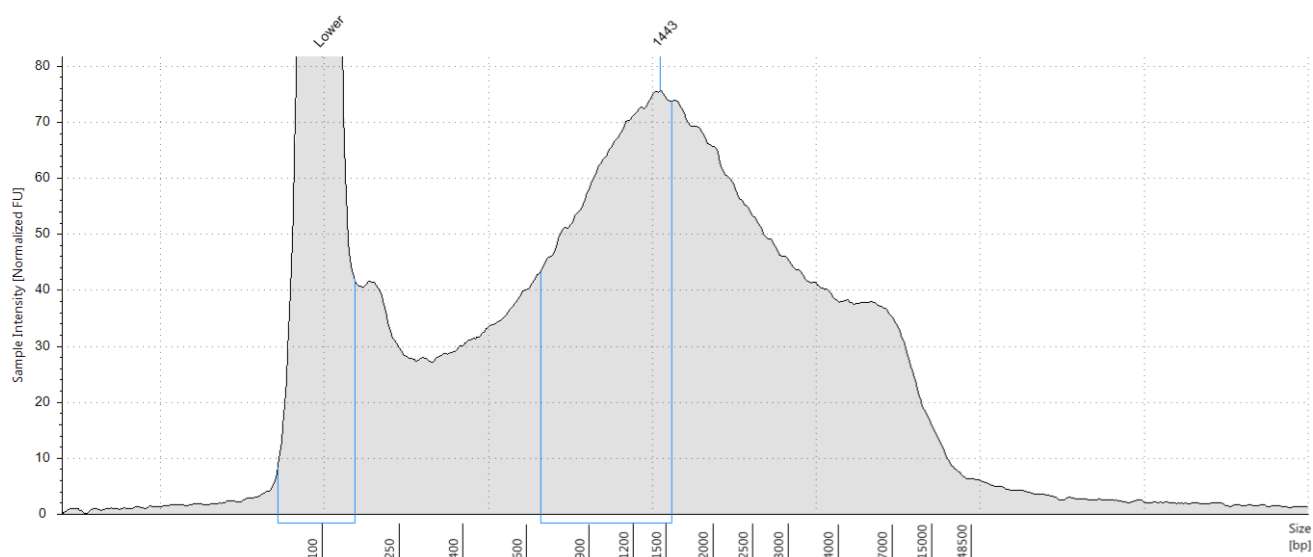
Sample Table

Well	DIN	Sample Description	Alert	Observations
B1	6.7	1 Beef Before		Sample concentration outside recommended range

Peak Table

Size [bp]	Calibrated Conc. [ng/ul]	Assigned Conc. [ng/ul]	% Integrated Area	From [bp]	To [bp]	Peak Comment	Observations
100	8.50	8.50	-	61	147		Lower Marker
13528	109	-	57.40	4156	20852		
54439	66.9	-	35.36	20852	>60000		
-	-	-	-	-	-		Sample Well

C1: 2 Beef After



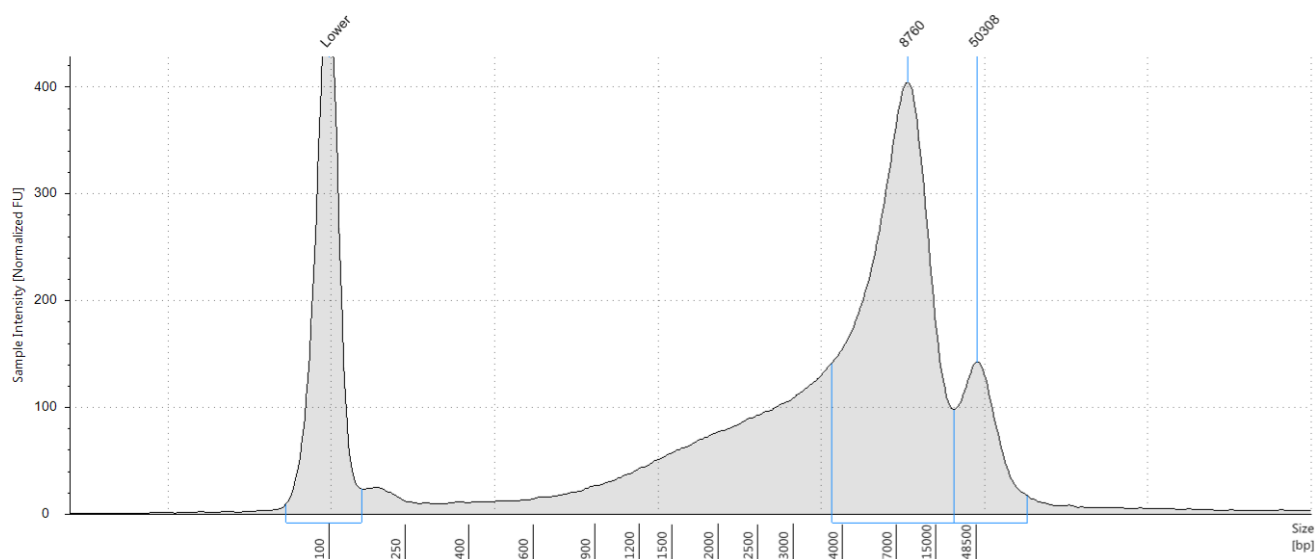
Sample Table

Well	DIN	Sample Description	Alert	Observations
C1	3.2	2 Beef After		

Peak Table

Size [bp]	Calibrated Conc. [ng/μl]	Assigned Conc. [ng/μl]	% Integrated Area	From [bp]	To [bp]	Peak Comment	Observations
100	8.50	8.50	-	59	148		Lower Marker
1443	4.69	-	100.00	658	1553		

D1: 3 Pork Before



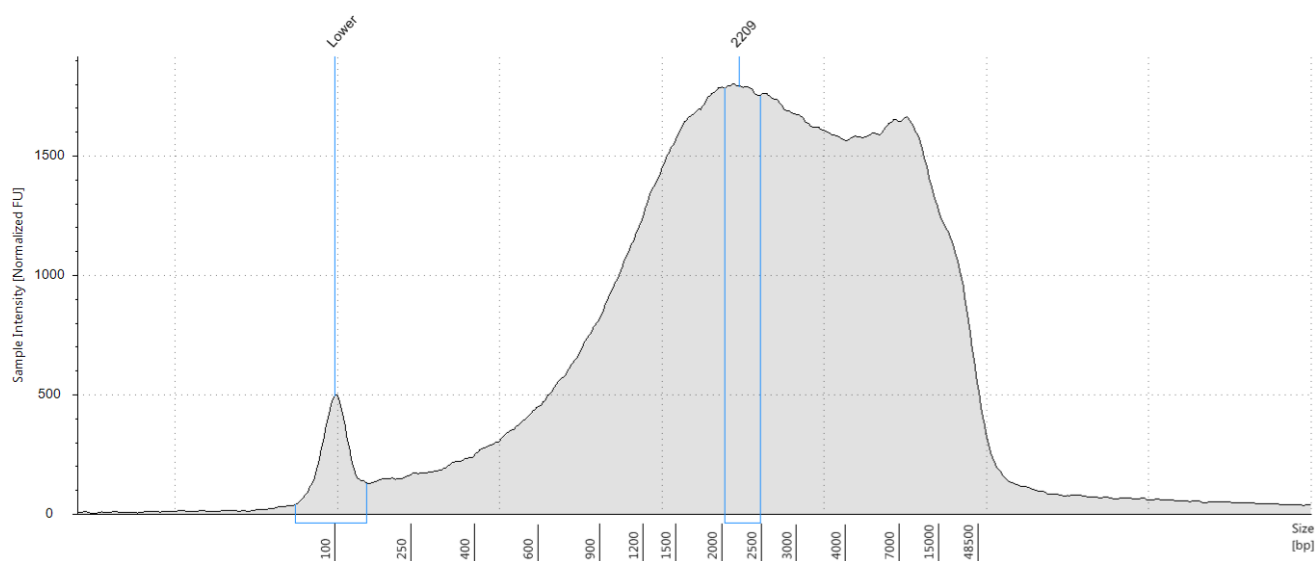
Sample Table

Well	DIN	Sample Description	Alert	Observations
D1	6.3	3 Pork Before		

Peak Table

Size [bp]	Calibrated Conc. [ng/μl]	Assigned Conc. [ng/μl]	% Integrated Area	From [bp]	To [bp]	Peak Comment	Observations
100	8.50	8.50	-	60	148		Lower Marker
8760	18.1	-	81.63	3775	21617		
50308	3.80	-	17.14	21617	>60000		
-	-	-	-	-	-		Sample Well

E1: 4 Pork After



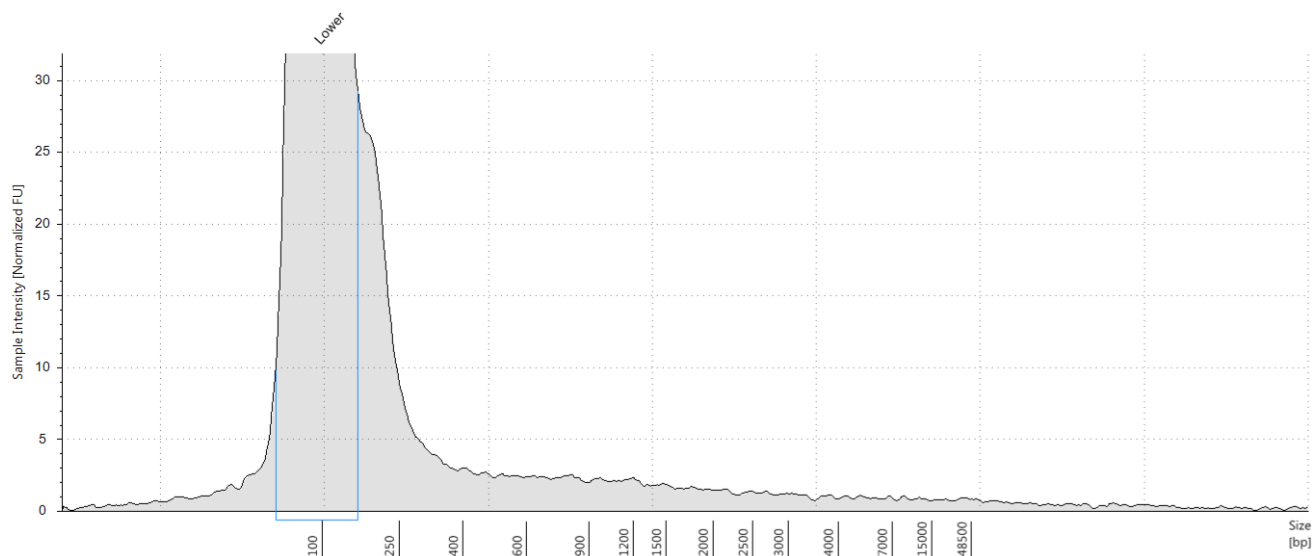
Sample Table

Well	DIN	Sample Description	Alert	Observations
E1	4.8	4 Pork After	⚠	Sample concentration outside functional range for DIN

Peak Table

Size [bp]	Calibrated Conc. [ng/ul]	Assigned Conc. [ng/ul]	% Integrated Area	From [bp]	To [bp]	Peak Comment	Observations
100	8.50	8.50	-	62	146		Lower Marker
2209	34.1	-	100.00	2038	2493		

F1: blank



Sample Table

Well	DIN	Sample Description	Alert	Observations
F1	-	blank	▲	Sample concentration outside functional range for DIN

Peak Table

Size [bp]	Calibrated Conc. [ng/ul]	Assigned Conc. [ng/ul]	% Integrated Area	From [bp]	To [bp]	Peak Comment	Observations
100	8.50	8.50	-	57	153		Lower Marker