

# Staphylinidae of North America

Rove beetles (Coleoptera: Staphylinidae) are members of the largest beetle family, with over 62,000+ species worldwide. The family is divided into 32 subfamilies, 26 of which are found in North America, as illustrated below. The approximate numbers of species in each subfamily in North America and worldwide are given (based on Asenjo *et al.* 2013, Newton *et al.* 2001, and O'Keefe 2001) but many more remain to be discovered and described.

Visit <http://keys.lucidcentral.org/keys/v3/nastaphylinidae/> for a Lucid key to North American Subfamilies.



**Aleocharinae**  
1385 / 12,851 spp.



**Dasycerinae**  
4 / 17 spp.



**Empelinae**  
1 / 1 sp.



**Euaesthetinae**  
22 / 762 spp.



**Habrocerinae**  
8 / 22 spp.



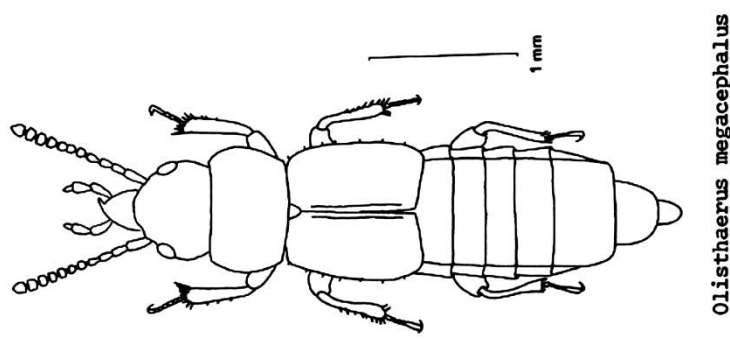
(Photo by C. E. Carlton)  
**Leptotyphlinae**  
13 / 521 spp.



**Megalopsidiinae**  
2 / 164 spp.



**Micropeplinae**  
15 / 80 spp.



(Moore and Legner 1979)  
**Olisthaerinae**  
2 / 2 spp.



**Omaliinae**  
200 / 1,396 spp.



**Osoriinae**  
31 / 2,083 spp.



**Oxyporinae**  
14 / 95 spp.



**Oxytelinae**  
262 / 1,975 spp.



**Paederinae**  
436 / 6,101 spp.



**Phloeocharinae**  
6 / 52 spp.



**Piestinae**  
5 / 104 spp.



**Proteininae**  
22 / 190 spp.



**Pselaphinae**  
710 / 9,110 spp.



**Pseudopsinae**  
12 / 54 spp.



**Scaphidiinae**  
70 / 1,451 spp.



**Scydmaeninae**  
217 / 4,821 spp.



**Staphylininae**  
546 / 6,876 spp.



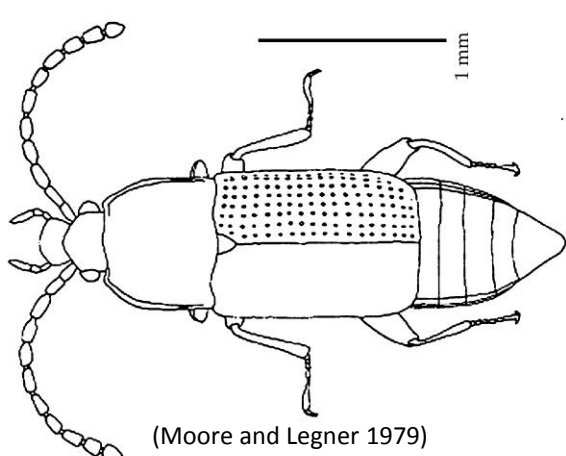
**Steninae**  
169 / 2,246 spp.



**Tachyporinae**  
195 / 1,528 spp.



**Trichophyinae**  
4 / 16 spp.

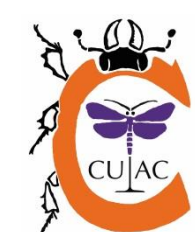
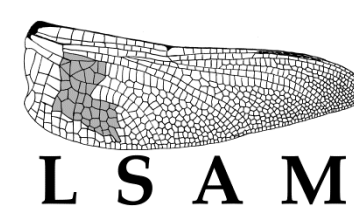


(Moore and Legner 1979)  
**Trigonurinae**  
7 / 10 spp.

## REFERENCES

- Asenjo, A., U. Irmeler, J. Klimaszewski, L. H. Herman, and D. S. Chandler. 2013. A complete checklist with new records and geographical distribution of the rove beetles (Coleoptera, Staphylinidae) of Brazil. *Insecta Mundi* 0277: 1–419.
- Hatch, M. H. 1957. The beetles of the Pacific Northwest. Part II. Staphyliniformia. University of Washington Publications in Biology 16: 1–384.
- MCZ Type Database @ Harvard Entomology. Online at <http://insects.oeb.harvard.edu/mcz/>
- Moore, I., and E. F. Legner. 1979. An illustrated guide to the genera of the Staphylinidae of America north of

- Mexico, exclusive of the Aleocharinae (Coleoptera). University of California division of Agricultural Sciences Priced Publication, 4093: 1–332.
- Newton, A. F., Jr., M. K. Thayer, J. S. Ashe, and D. S. Chandler. 2000 [2001]. 22. Staphylinidae Latreille, 1802. p. 272–418. In: R. H. Arnett, Jr., and M. C. Thomas (eds.). American beetles, Volume 1. CRC Press; Boca Raton, FL. ix + 443 p.
- O'Keefe, S. T. 2001. 20. Scydmaenidae Leach, 1815. p. 259–267. In: R. H. Arnett, Jr., and M. C. Thomas (eds.). American beetles, Volume 1. CRC Press; Boca Raton, FL. ix + 443 p.



Michael L. Ferro 2018